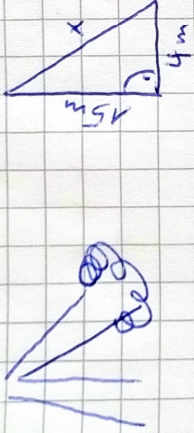


### Aufgabe 15

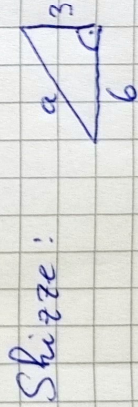
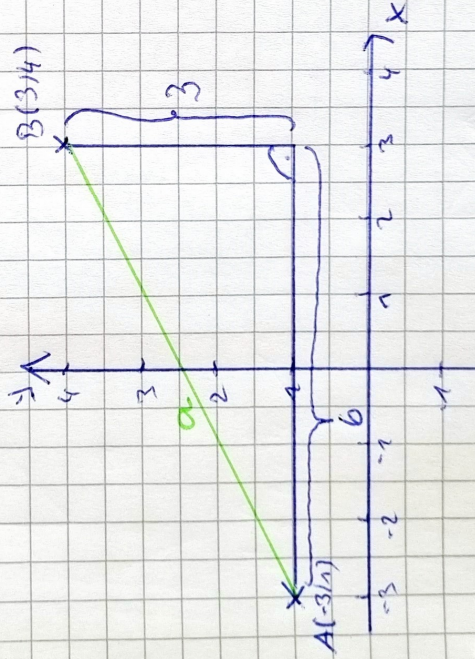
Bild Skizze



Ansatz:  $x^2 = 15^2 + 4^2$  |  $\sqrt{\quad}$   
 $x = 15,52 \text{ m}$

Höhe des Baumes =  $15 \text{ m} + x$   
 $h = 15 + 15,52$   
 $h = 30,5 \text{ m}$

### Aufgabe 25



Ansatz:  $a^2 = 3^2 + 6^2$  |  $\sqrt{\quad}$   
 $a = 6,7 \text{ LE}$